

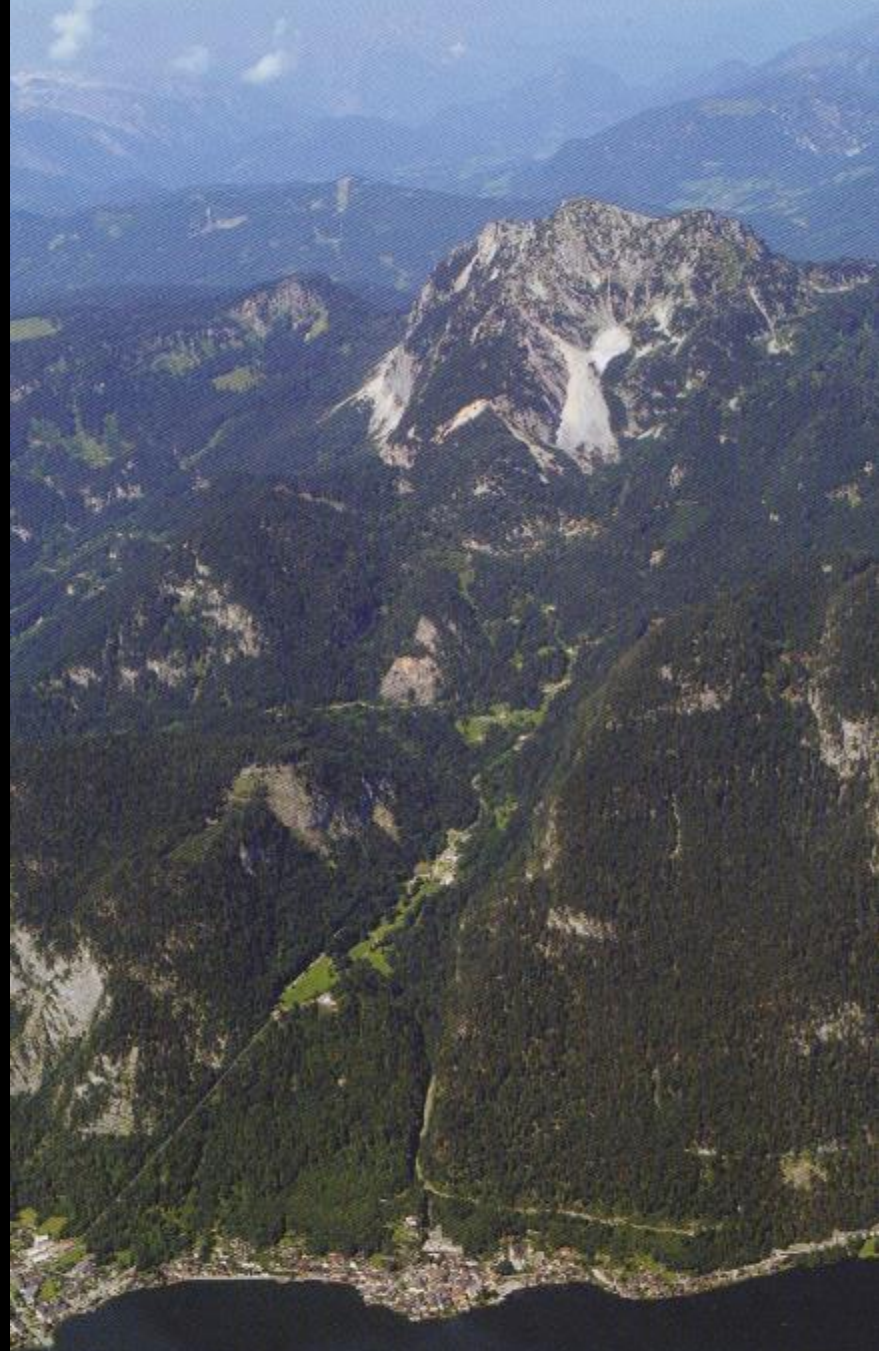
Shiraz Art University  
19 October 2017

# ART-BASED FUTURES

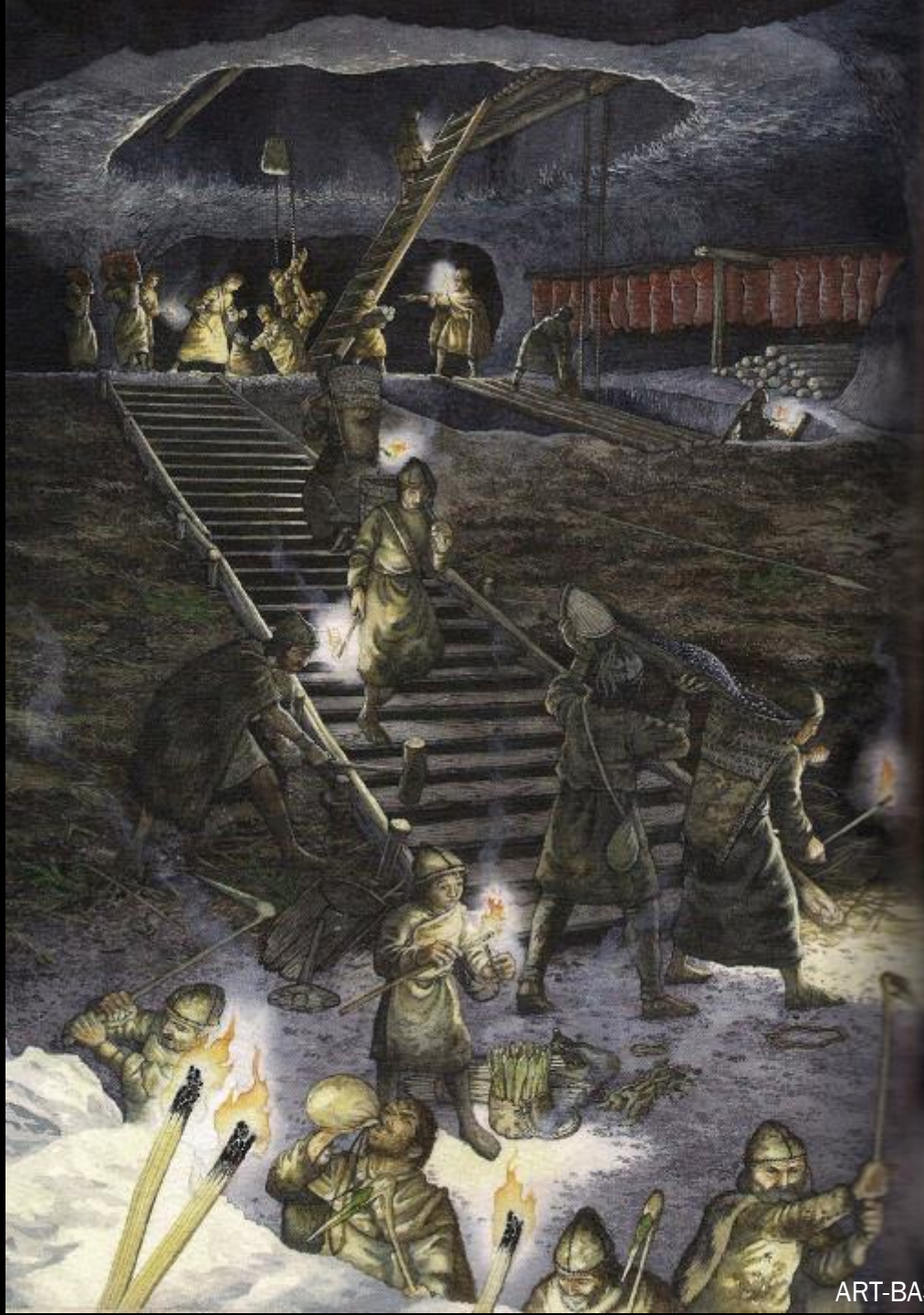
Cornelia Bast / Gerald Bast

*di:* 'angewandte

Universität für angewandte Kunst Wien  
*University of Applied Arts Vienna*







12  
13  
1

Sammlung REIN IST BESSER ALS FEIN aus Transformationen der Zeit

12  
13  
2

Sammlung SCHNELL aus Transformationen der Zeit

12  
13  
3

Sammlung TREKKING aus Transformationen der Zeit

12  
13  
4

Sammlung ROLL aus Transformationen der Zeit





Herausgegeben von | Edited by  
Janet Ritterman  
Gerald Bast  
Jürgen Mittelstraß

# **Kunst und Forschung**

Können Künstler Forscher sein?

## **Art and research**

Can artists be researchers?

ÖSTERREICHISCHER  
WISSENSCHAFTSRAT

 Springer Wien New York

edition: *angewandte*

Art communicates truths,  
which are not communicable  
in any other language.

(Herbert Marcuse)

In a scientific theory, even before it is proved,  
you know that it is correct because it is  
*aesthetically* satisfying.

One uses criteria that go far beyond what is  
called logical deduction.

In a scientific theory, even before it is proved,  
you know that it is correct because it is  
*aesthetically* satisfying.  
One uses criteria that go far beyond what is  
called logical deduction.

(Wolf Singer, Max Planck Institute for Brain Research)

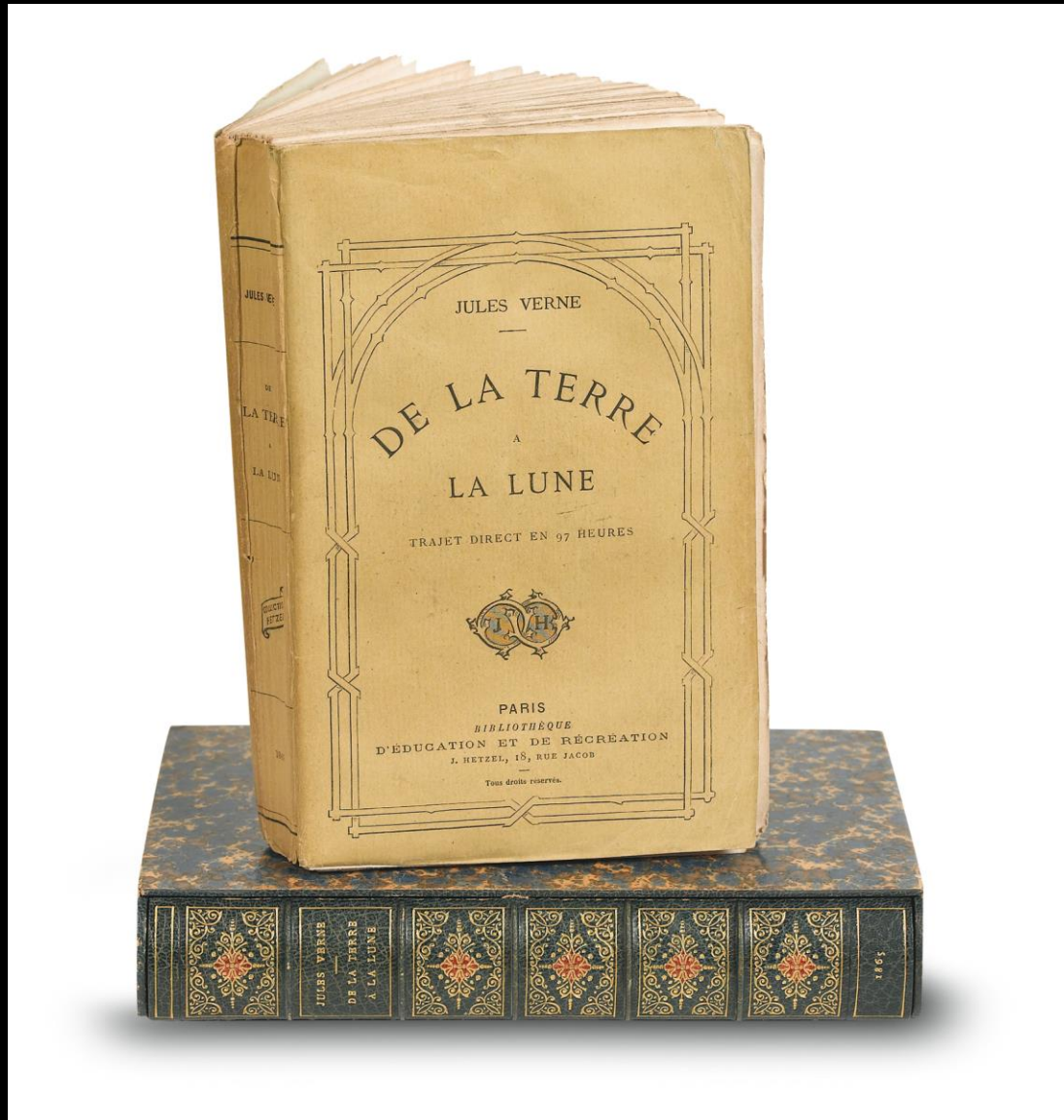
Imagination  
is more important than knowledge.

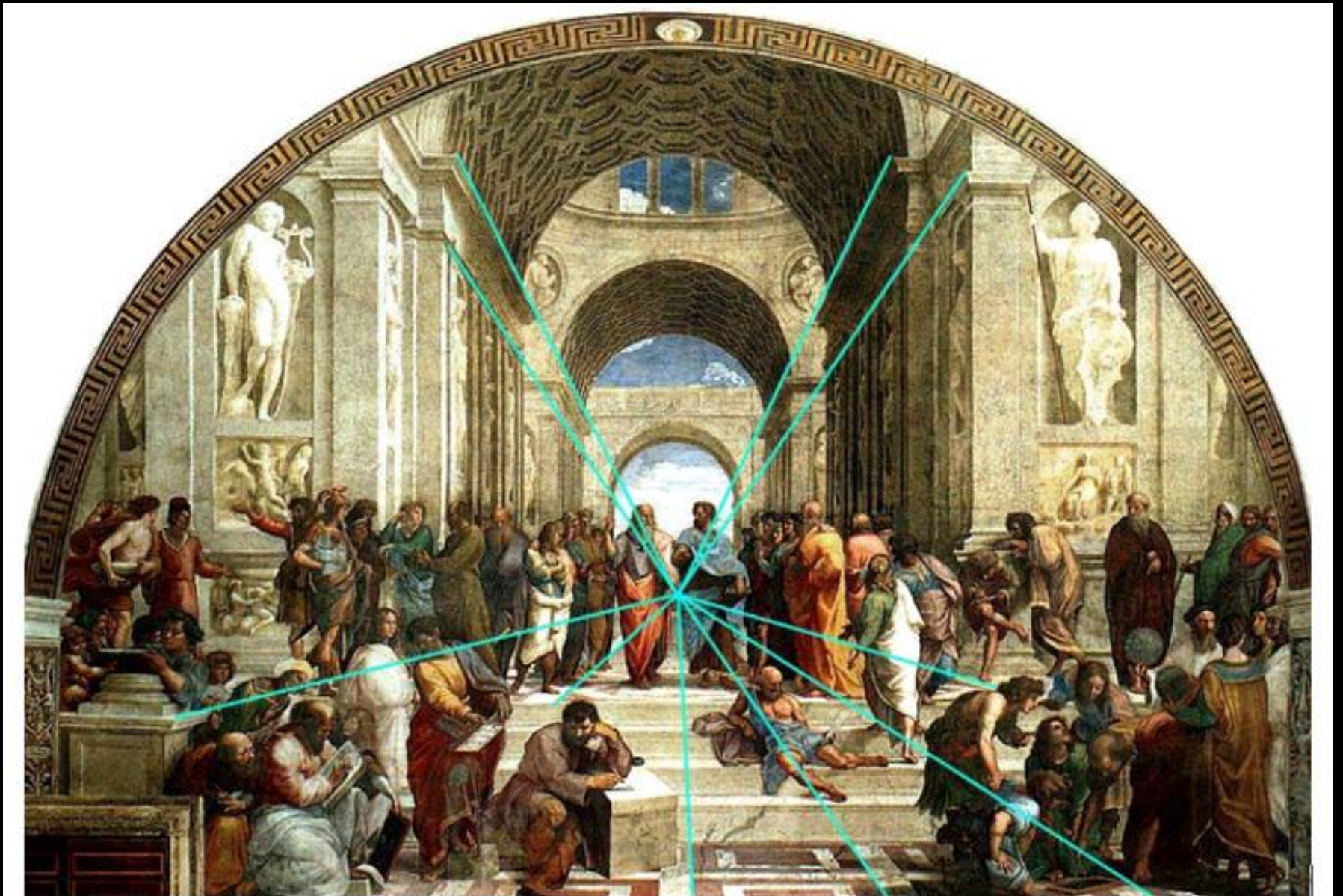
(Albert Einstein)

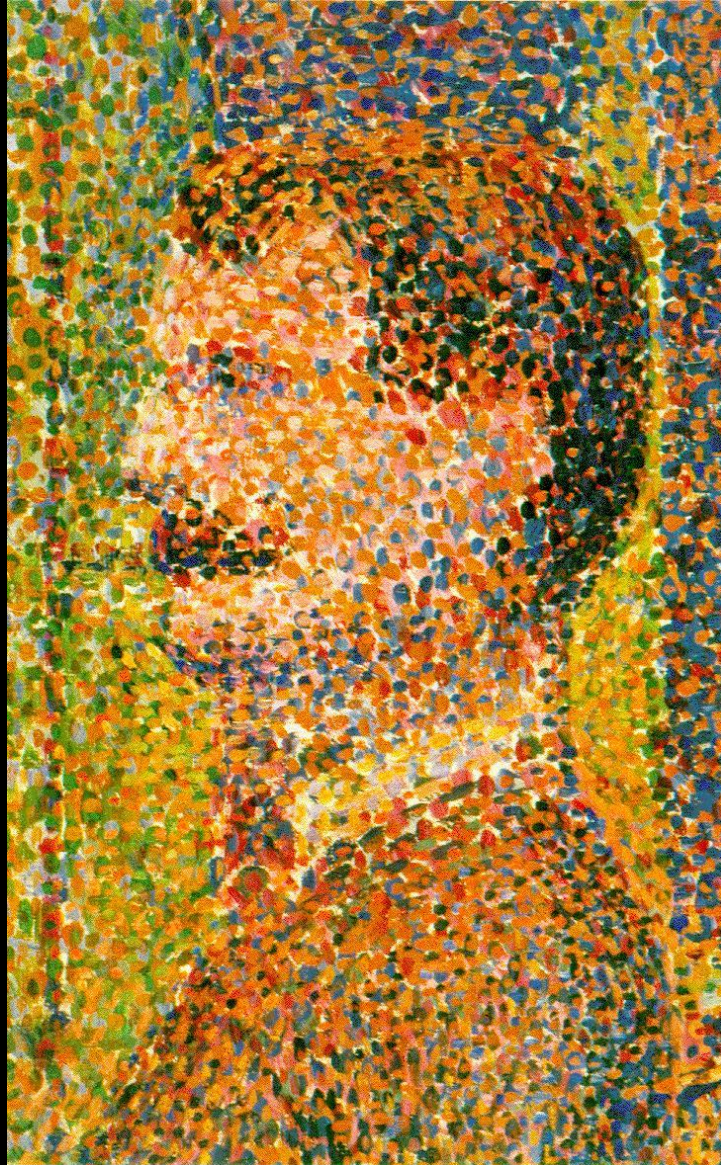




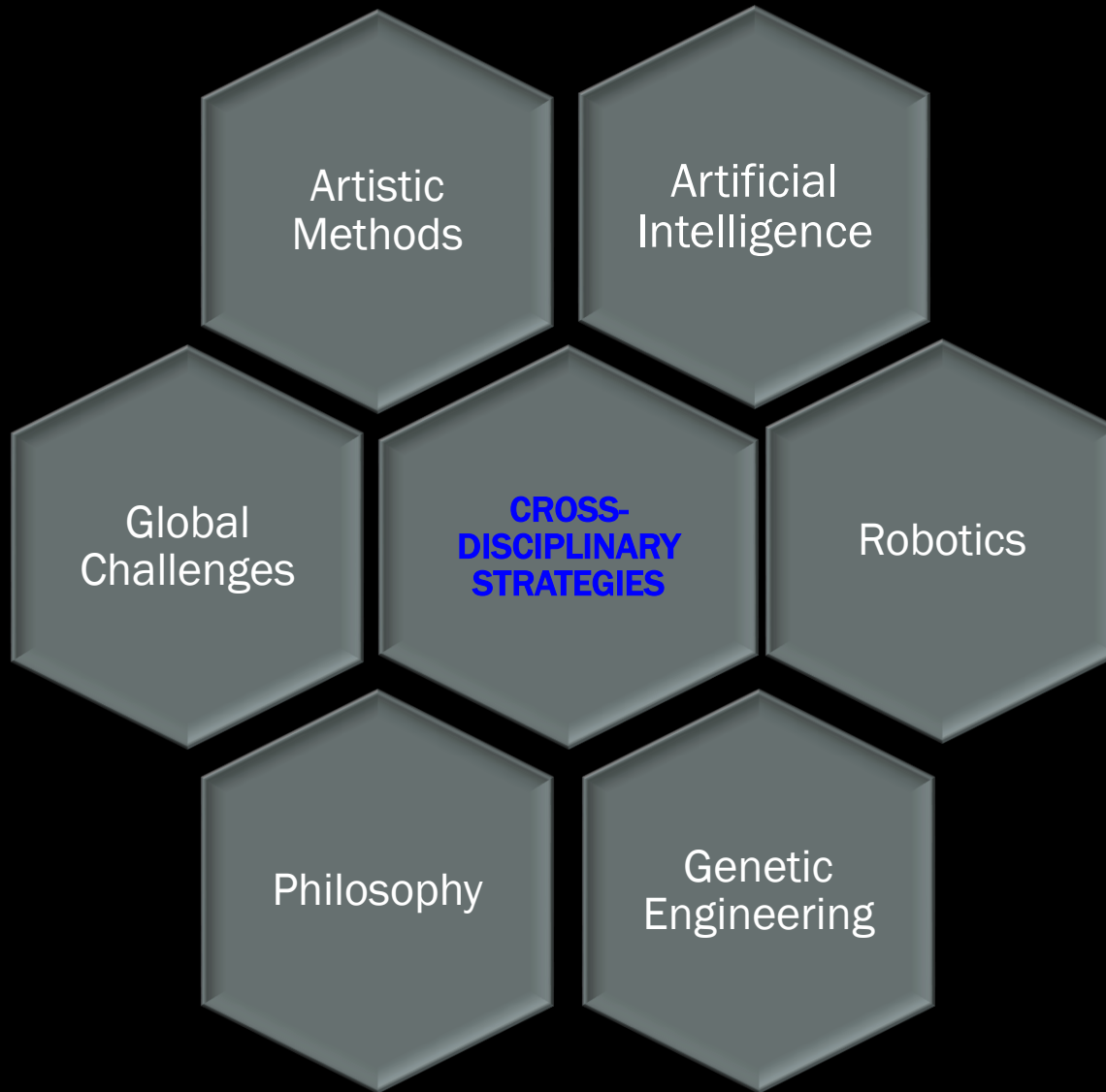














# Fel Dementia

**Art-based Research on the Preconditions for  
Social Inclusion of People Living with Dementia**

**Cornelia Bast and Antonia Eggeling**

# RESEARCH

shared flats & day-care centres



# FINDINGS

- feeling insecure
- having problems with orientation
- sensual overload
- feeling ashamed

Feel  
Dementia

# AUDITIVE INTERVENTION

identify special noises  
fulfil different tasks

Feel  
Dementia

# FOKUNG WIRKUS

Arte Laguna 2011  
Venice, Arsenale

Feel  
Dementia



# VISUAL INTERVENTION

choose a goal



Real  
Dementia

# VISUAL INTERVENTION

where is the mark



# VISUAL INTERVENTION

companionship

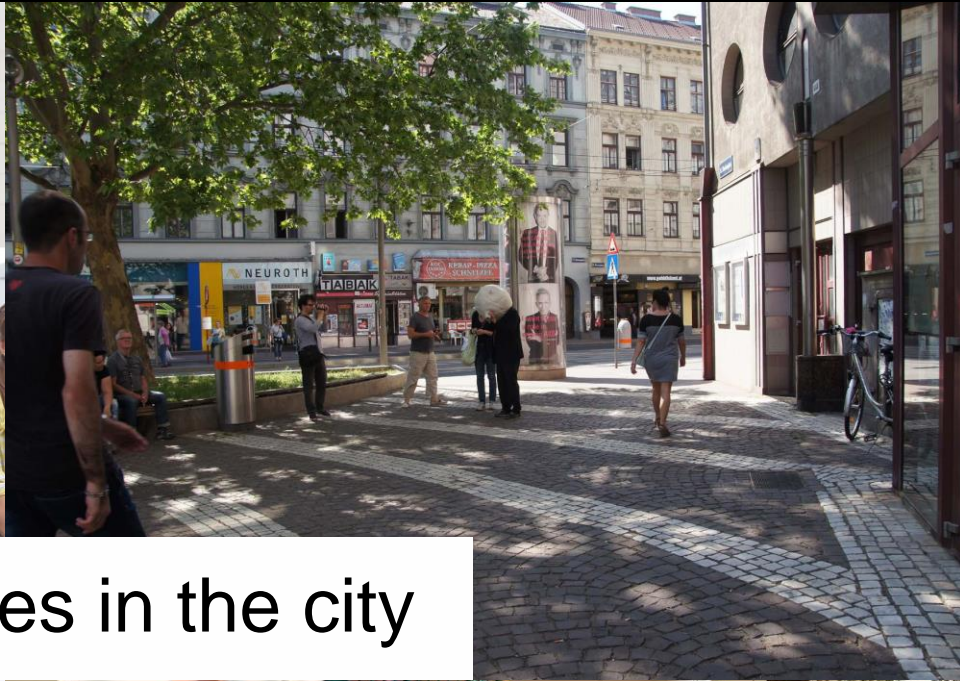
Festival  
Dementia



# INTERVENTIONS



several places in the city



# INTERVIEWS



Feel  
Dementia



# FEEDBACK CARDS



Feel  
Dementia



# COMMUNICATION TOOL



Feel  
Dementia

# COMMUNICATION TOOL



Feel  
Dementia

DEMENTIA. ARTS. SOCIETY.

# DNEMEZ WELTNE

# DNEMETIA WOLDRS

Ruth Mateus-Berr, Cornelia Bast, Antonia Eggeling, Elisabeth Haid, Pia Scharler



**Giving  
people with  
dementia new  
perspectives on  
their abilities  
and social  
environment**

**Raising and positively  
influencing public  
awareness of the  
situation of people  
living with dementia**

# Perception Workshops

Feel  
Dementia  
for D. A. S.



DEMENTIA. ARTS. SOCIETY.

di:'angewandte FWF

# Sensory Workshop

DEMENTIA. ARTS. SOCIETY.

di:'Angewandte

supported by  
FWF  
Forschungsinstitut für Wissenschaften

ENNO  
BEA  
WALTER  
HELLMUT

## Sensory Workshop

in Zusammenarbeit mit Menschen die mit  
Demenz leben, ProMenz und Alzheimer Austria



Archive of  
Disarray

FAMILIAR  
AND YET  
STRANGE

SENSUAL  
FAKE

Preferences

Tree of  
Potentials

INI PART  
WHAT MOVES  
ME ?

**VIENNA  
DESIGN  
WEEK**

---

**DNEMETIA  
WOLDRS**

---

Expert  
Workshops

DEMENTIA. ARTS. SOCIETY.

dr:angewandte

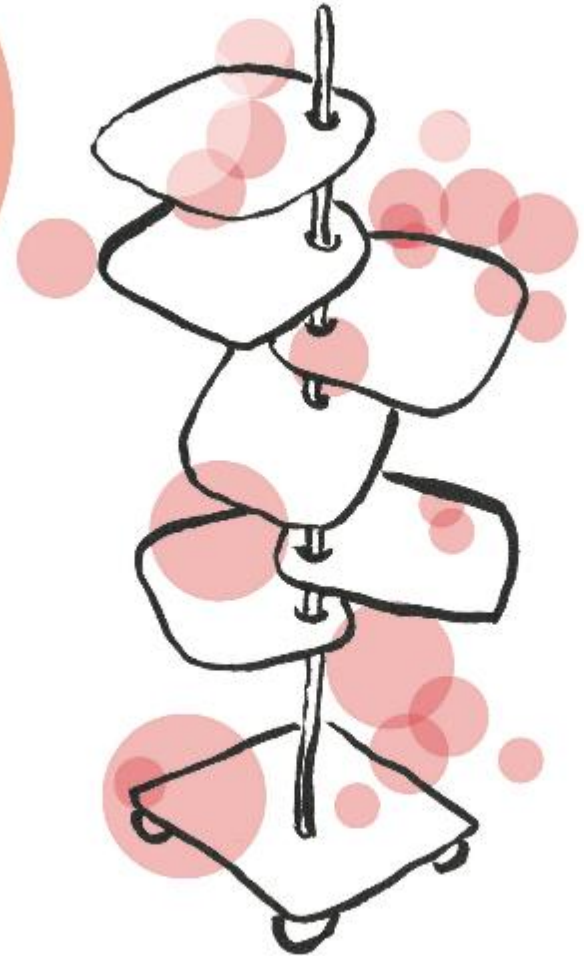
supported by  
FWF  
Forschungsinstitut für  
Wissenschaften

# Tree of Potentials

Cornelia Bast

## INI PART

WHAT MOVES ME ?





DEMENTIA. ARTS. SOCIETY.

dr!angewandte

Supported by  
FWF  
FEDERAL GOVERNMENT



DEMENTIA. AWARE SOCIETY.

an Angewandte FHUF  
University of Applied Sciences





DEMENTIA ARTS SOCIETY.

di'angewandte KUNST  
FLIE



DEMENTIA SPORTS SOCIETY.

an der Angewandte  
FH Wien  
Fakultät für Kunst und Design



DEMENTIA. ARTS. SOCIETY.

an der Universität Wien  
an der Universität Wien

supported by  
FWF  
Forschungsinstitut für  
Wissenschaften und Kulturen

EARLY AND  
INTERMEDIATE  
STAGE

singing in a choir  
**flowers**  
listening to music  
photographing  
schwimming  
going for a walk  
eroticism  
**reading**  
lying in the sun  
family

ADVANCED  
STAGE

horses  
**eating**  
baking  
variety  
schwimming  
listening to music  
Parkinson  
**singing** **reading**  
watching tv

PEOPLE  
WITHOUT  
DEMENTIA

**eating**  
singing  
family  
photographing  
schwimming  
**reading**  
listening to music  
cooking  
hiking  
traveling

EARLY AND  
INTERMEDIATE  
STAGE

set things  
in motion  
time for me  
friendly people  
**health** **singing**  
going for a walk together  
playing handball  
**holidays** being reborn  
suffering and death  
are also part of life

ADVANCED  
STAGE

baking  
more visits  
**eating**  
g'scheiten  
Schweinsbraten  
hiking  
washingmaschine  
**sun** **travelling**  
health  
holiday at the sea

PEOPLE  
WITHOUT  
DEMENTIA

standstill of time  
**health**  
professional success  
exploring the world **family**  
good education  
**travelling**  
long hikes  
playing the piano  
nice shared flat





A new, holistic way of thinking is required, as technological answers alone are not the end-solution to a given problem. Science and research have to look at the systemic effect of any action rather than merely the localized gain.

(EU Research Area Board)

Art Schools will get a new mission beyond the Art and design markets.

Providing creative skills:

- Dealing with uncertainty and ambiguity
- abstraction
- intuition
- re-combination
- contextualization

- How much will the effects of global warming and global migration change physical as well as social landscapes?

- How much will the effects of global warming and global migration change physical as well as social landscapes?
- Will we succeed in redefining and creating new forms of human work, when up to 50% of the now existing jobs will break away, due to robotics and Artificial Intelligence.

- How much will the effects of global warming and global migration change physical as well as social landscapes?
- Will we succeed in redefining and creating new forms of human work, when up to 50% of the now existing jobs will break away, due to robotics and Artificial Intelligence.
- Which kind of social fabric is needed in an urbanized and aging society?

- How much will the effects of global warming and global migration change physical as well as social landscapes?
- Will we succeed in redefining and creating new forms of human work, when up to 50% of the now existing jobs will break away, due to robotics and Artificial Intelligence.
- Which kind of social fabric is needed in an urbanized and aging society?
- What is the mission of mankind in a world of Artificial Intelligence, Machine Learning, and the bio-technological merge of man and machine?

A person is holding a large, white, fish-like sculpture. The sculpture has two large, circular, metallic-looking eyes and a small, circular, metallic-looking fin on its back. The person's hand is visible, wearing a ring and a watch. The background shows a sunny outdoor setting with trees and a building.

ART CANNOT CHANGE SOCIETY.  
BUT ART CAN CHANGE PEOPLE.  
AND PEOPLE CHANGE SOCIETIES.



THE FUTURE WILL BE ART-BASED !